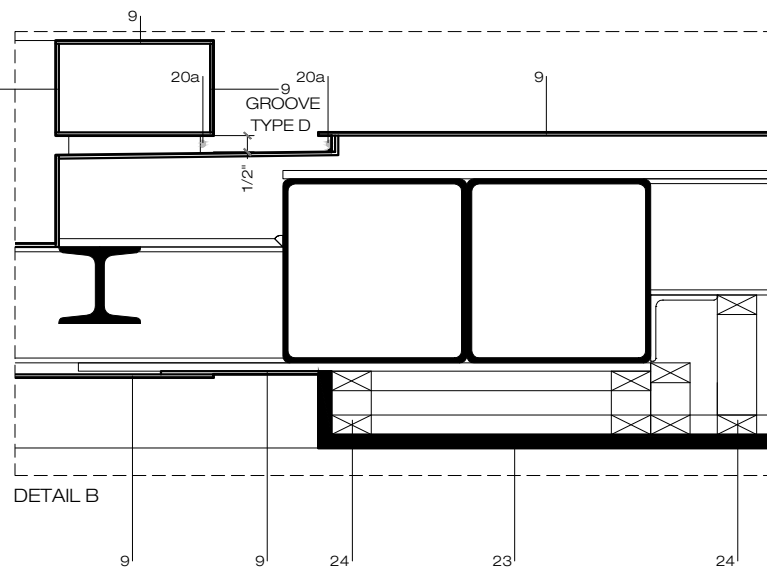
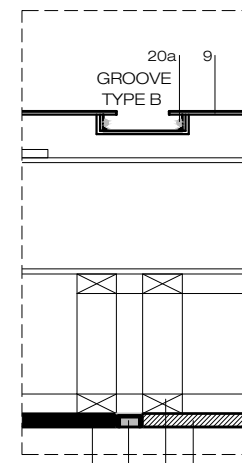


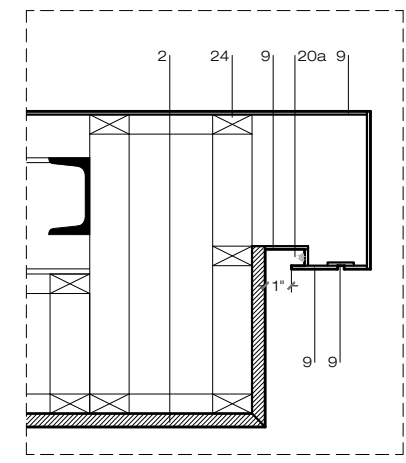
DETAIL A



DETAIL B



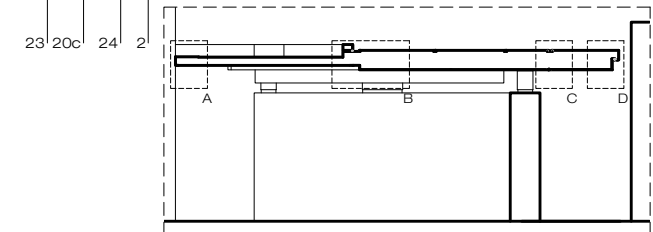
DETAIL C



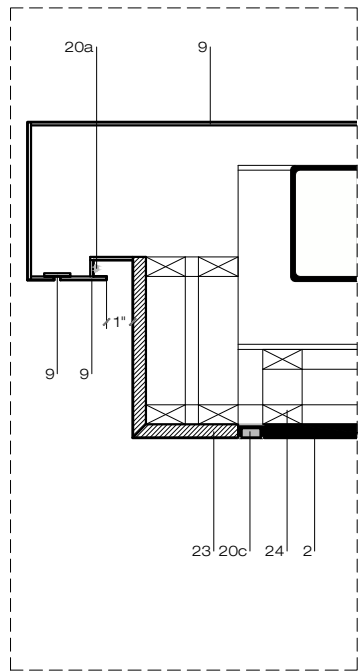
DETAIL D

LEGEND :-

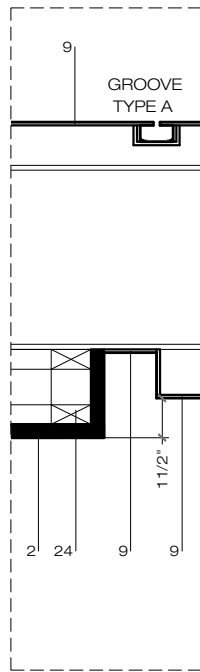
- 2. 1/2" GYPSUM BOARD CLADDING - PAINT FINISH
- 9. 3MM CORTEN STEEL SHEET CLADDING - SIZES AS PER DRAWINGS
- 20a. L.E.D. TAPE LIGHT
- 20c. L.E.D. STRIP LIGHT
- 23. BEECH WOOD
- 24. 1 1/2" x 3/4" ALUMINUM SECTION FOR GYPSUM BOARD/ BEECH WOOD CLADDING SUPPORT



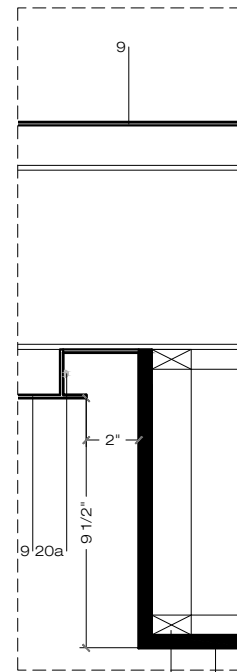
SECTION BB



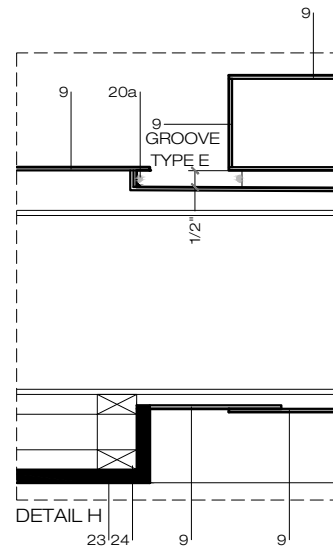
DETAIL E



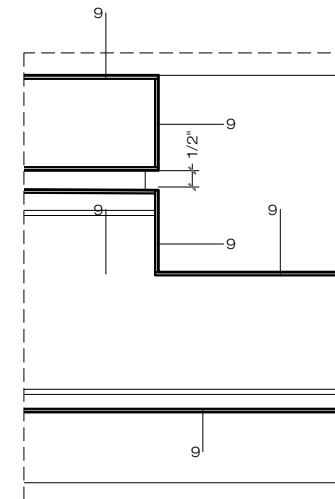
DETAIL F



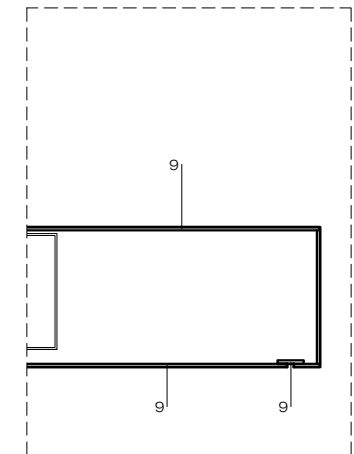
DETAIL G



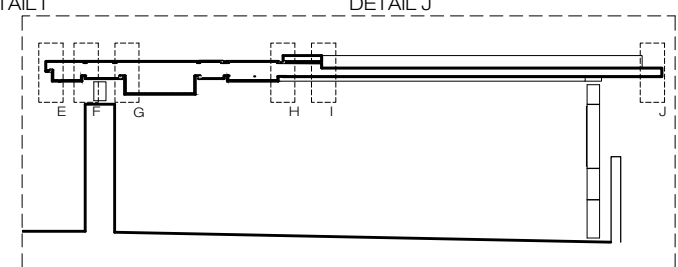
DETAIL H



DETAIL I



DETAIL J



SECTION CC